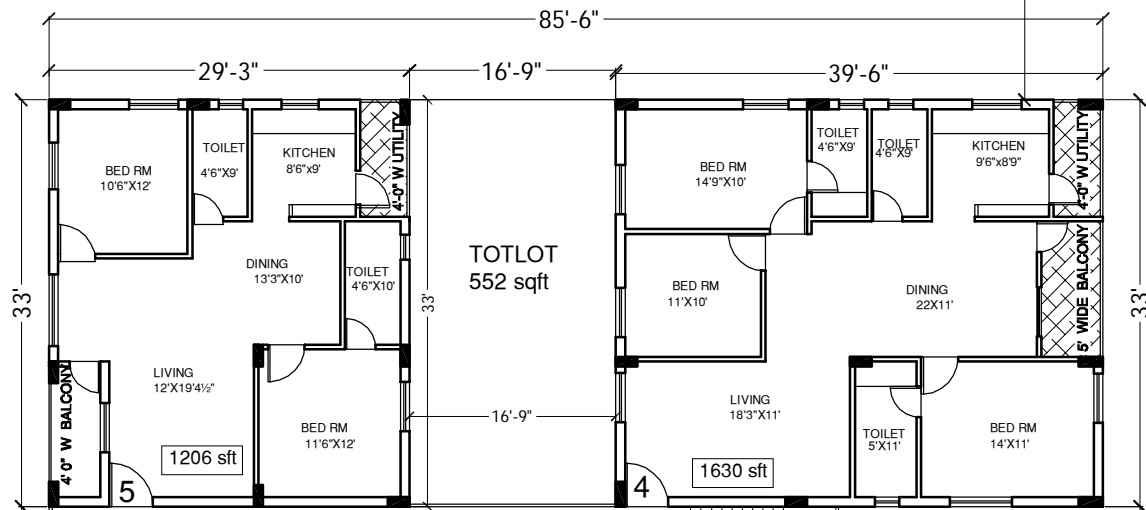


30' WIDE ROAD

125'-6"

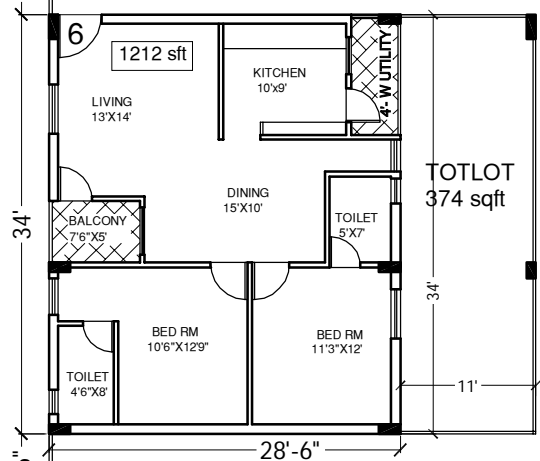
GATE



TOTLOT 552 sqft

6'6" WIDE CORRIDOR

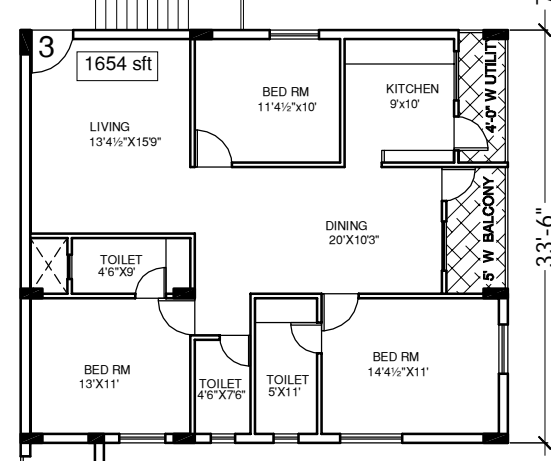
open to sky



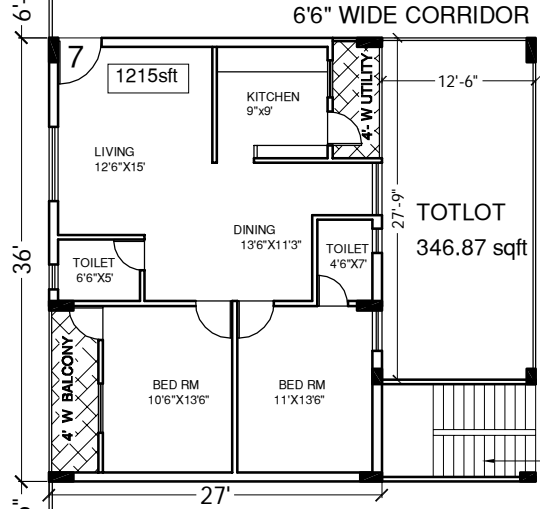
TOTLOT 374 sqft

6'6" WIDE CORRIDOR

UP



open to sky

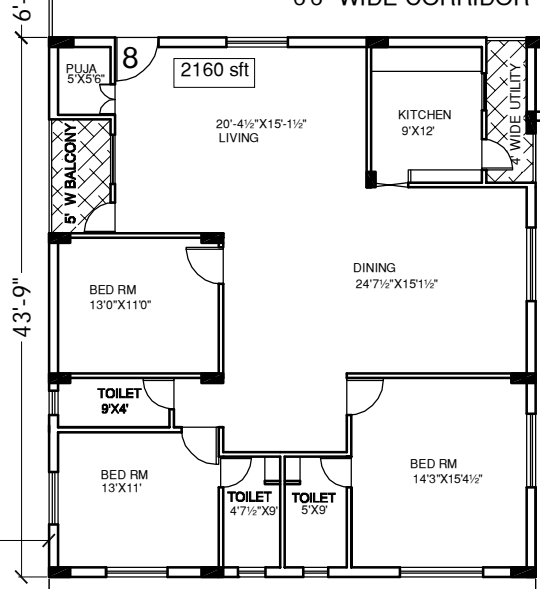


TOTLOT 346.87 sqft

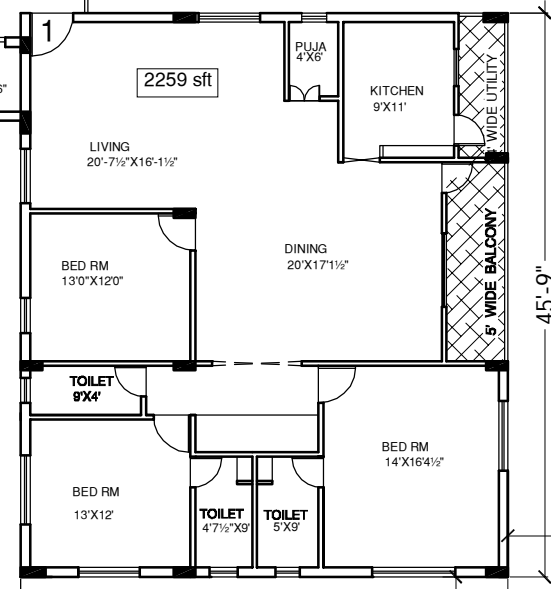
6'6" WIDE CORRIDOR



open to sky



open to sky



GATE

100' WIDE ROAD

206'-3"

NORTH

